



800-504-5684
info@bigdogbumpers.com
www.bigdogbumpers.com

DODGE 06-08 4500/5500 FRONT BUMPER REPLACEMENT

PART NUMBER : 510 102 0600

TOOLS NEEDED : 10mm SOCKET OR WRENCH
19mm SOCKET AND WRENCH
24mm SOCKET AND WRENCH
LEVEL (IF AVAILABLE)



PICTURE # 1



PICTURE # 2

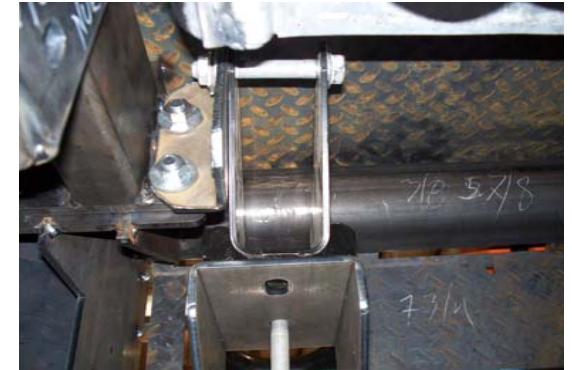


PICTURE # 3

1. Loosen front turbo intercooler by removing 10mm bolts from top cross frame. SEE PICTURE #1 This will give you movement needed to remove factory bolt plate from factory bumper frame brackets.
2. Remove tow hooks (24mm) from frame, pull out from back side of bumper.
3. Remove factory bolt plate and nuts from frame. (Hold factory bumper while removing bolt plates) Retain factory hardware for installation of new **Big Dog** bumper.
4. Take off factory bumper. With factory bumper off remove fog lights (if equipped) and install onto new **Big Dog** bumper, using factory hardware. As well as factory wire harness.
5. Install **Big Dog** frame brackets onto truck. * They will fit over the frame with **Big Dog** bracket bolt holes to the inside of the frame. SEE PICTURE #2
6. Insert factory bolt plate thru **Big Dog** bracket and frame, from inner side to outer side. SEE PICTURE #3 Also insert 5in. Bolt provided thru bottom bracket hole, thread nuts hand tight for now.
7. Place level on front flat part of **Big Dog** frame bracket, tighten bolts to 70 lbs. of torque. * By keeping the frame brackets level, this will make adjusting bumper to lines of truck easier when you put on new **Big Dog** bumper.
8. Install bumper by matching up frame brackets to bumper brackets; insert 4 - 2in.x 1/2in.bolts provided from front to back on each bracket. Hand tighten for now.
9. Adjust bumper up-down and left-right, to get good even fit under headlights and fender lines.
10. Once adjusted for fit, tighten the 2 bolts on the outer side of bracket to 70 lbs. of torque. Bumper will now stay in place.
11. Remove nuts from 2 bolts on inner side of brackets, install new tow hook angle bracket. SEE PICTURE #4
12. Install tow hooks, from back side of bumper. Align bolt holes on bottom of tow hooks to welded tow hook bracket. With factory tow hook bolt, thread thru front round hole from the bottom. With other factory tow hook bolt, insert thru top hole on tow hook: insert spacer between factory tow hook bracket walls. This bolt will only go from inner side to outer side, also passing thru new tow hook angle bracket. Thread factory lock nut and tighten to 70 lbs. of torque. Repeat on other side. Insert 1 1/2 in. bolt in oval bracket hole, repeat on other side. SEE PICTURE #5
13. Tighten (to 70 lbs. of torque) the 2 inner bolts where you installed the new angle tow hook bracket.
14. Install safety support brackets by, removing nut from middle factory frame bolt. Place rounded end of bracket at hole located at the bottom backside of vertical support, insert 1 1/2 in bolt from outer side to inner side thread bolt and hand tighten at this time. SEE PICTURE #6
15. Place boxed end of bracket over middle factory frame bolt, thread nut and tighten bolts to 70 lbs. of torque. SEE PICTURE #7

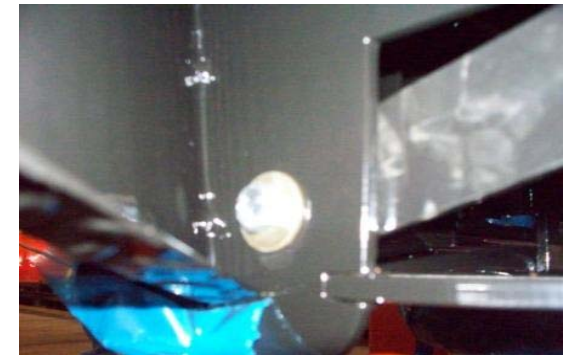


PICTURE # 4

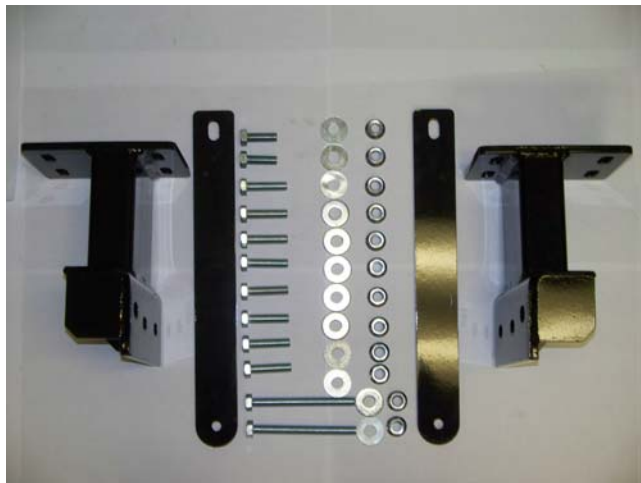


PICTURE # 5

- HARDWARE PROVIDED :
- 2 - 5 IN. BOLTS
 - 4 - 1 ½ IN. BOLTS
 - 8 - 2 in. BOLTS
 - 14 - FLAT WASHERS
 - 14 - FLANGE NUTS



PICTURE # 6



PICTURE # 7